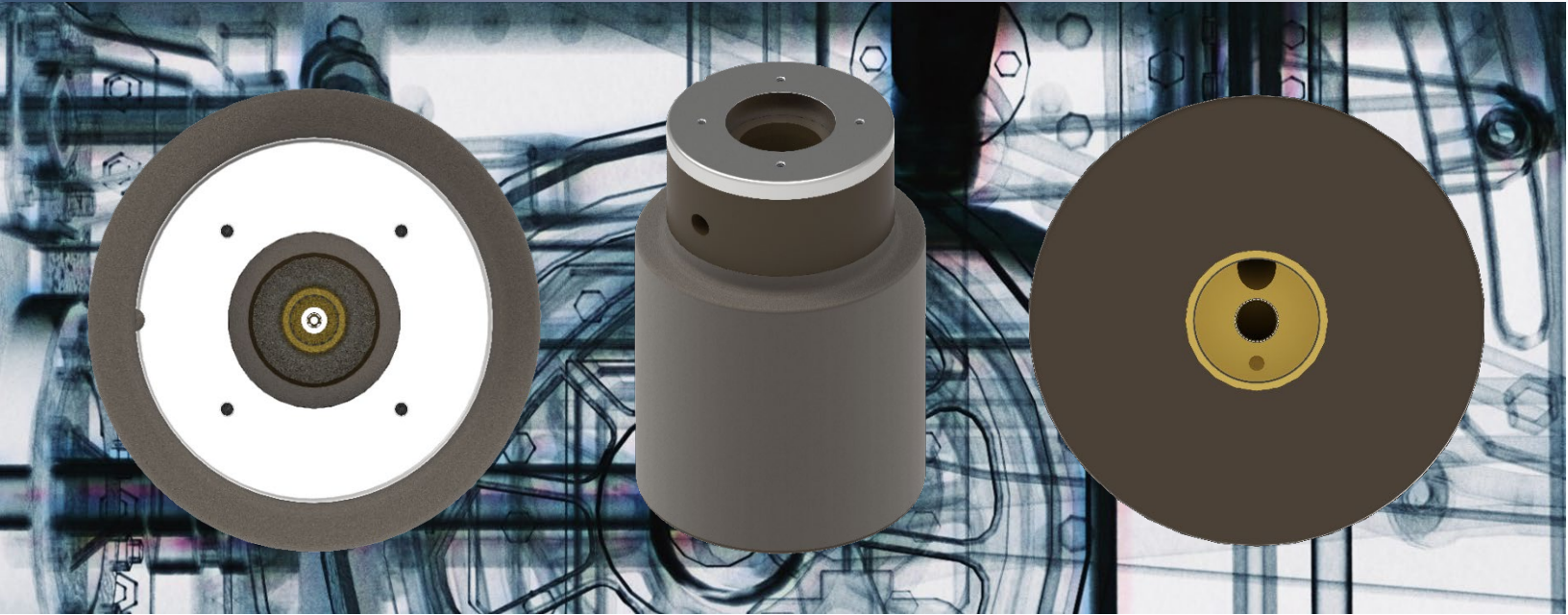


CA207 Adaptor

225 kVDC rated High Voltage Anode Adaptor



DESCRIPTION

The CA207 is a 225kVDC rated axial anode adaptor who is an integral part of the X-ray tube design. It converts the anode ceramic flat disk side of a X-ray tube into a field installable CA18(SL)(R28) connector.

FEATURES

- Helix shaped cooling channels for oil insulation
- 225kVDC rated uni- & 450kVDC bi-polar design
- Single pole, inlet & outlet cooling channel
- Maintenance free flat disk design
- Robust conductive coating
- UL recognized component
- RoHS & REACH compliant

APPLICATIONS

- Irradiation systems
- (Stationary) anode X-Ray tubes
- Non-destructive Imaging Applications

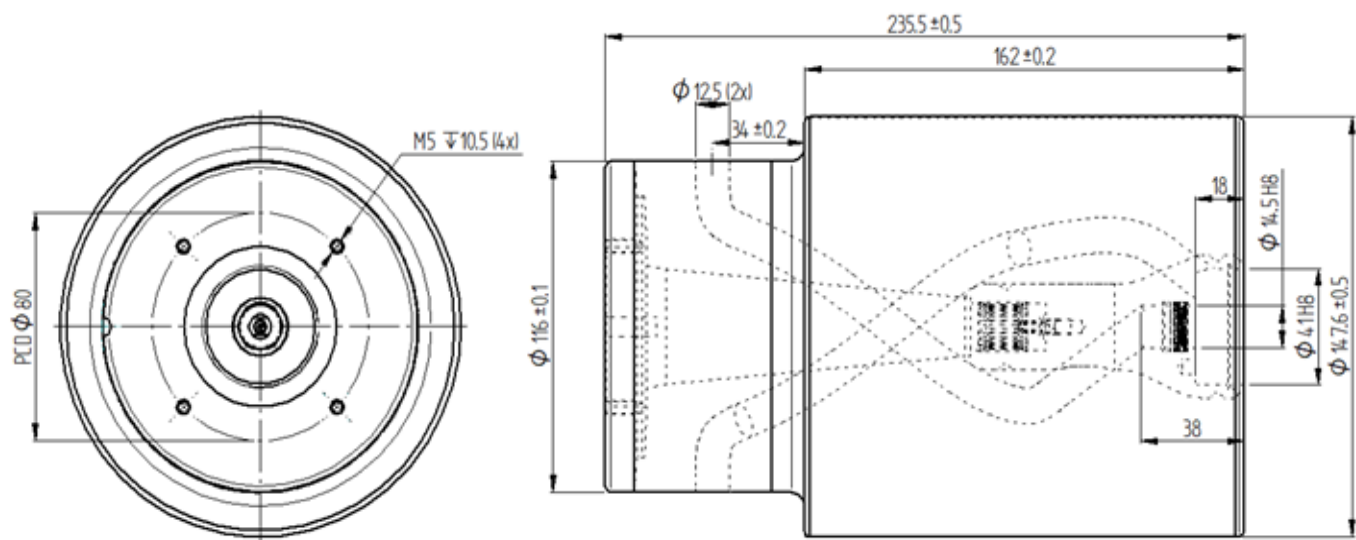
INSTALLATION

The CA207 flat disk side is factory installed with a silicone washer, maintenance free and not serviceable in the field. The CA18 (SL) is field serviceable, please refer to the installation guidelines for more information.

CONNECTOR TYPE

- CA18 (SL) (R28)

CONSTRUCTION CA207 Adaptor (Dimensions in mm)



Technical Specifications	
Number of contacts	1
Rated voltage / Peak voltage	225 kVDC / 250 kVDC
Duty cycle (t-on / t-off)	On-time min 1sec – max 24h-continuous
Max. voltage rise & fall (kV/sec)	≤200kV/2s
PD stability	<10pC @ Uoac
Max. operating temperature	+0°C +80°C (Contact insert temp.) +0°C +60°C (Average adaptor temp.)
Leak rate cooling channels	<10-7mbar helium/sec
Cooling medium velocity / speed / pressure	Min: 16l/min, Max: 40l/min, Use max. 5 bar

MORE INFORMATION

Varex Imaging Nederland B.V. is part of Varex Imaging Corporation a leading innovator, designer, and manufacturer of X-ray imaging components, which includes tubes, digital flat panel detectors and other image processing solutions, which are key components of X- ray imaging systems.

TAILORED SOLUTIONS

In case our existing offering doesn't fit your needs, we have the inhouse capabilities to design a HV-connection and / or cable exactly as you need.

For more information, please contact a Varex Imaging sales representative in your territory. Contact details are available at www.vareximaging.com/contact/.

The data in this document is for reference only. Contents in this document are subject to change without notice.



USA HEADQUARTERS
Salt Lake City, UT
P: +1-801-972-5000

Connect & Control Solutions
Doetinchem, Netherlands
Tel: +31 314-799870
Netherlands.CNC@vareximaging.com

For a complete listing of our global offices, visit www.vareximaging.com