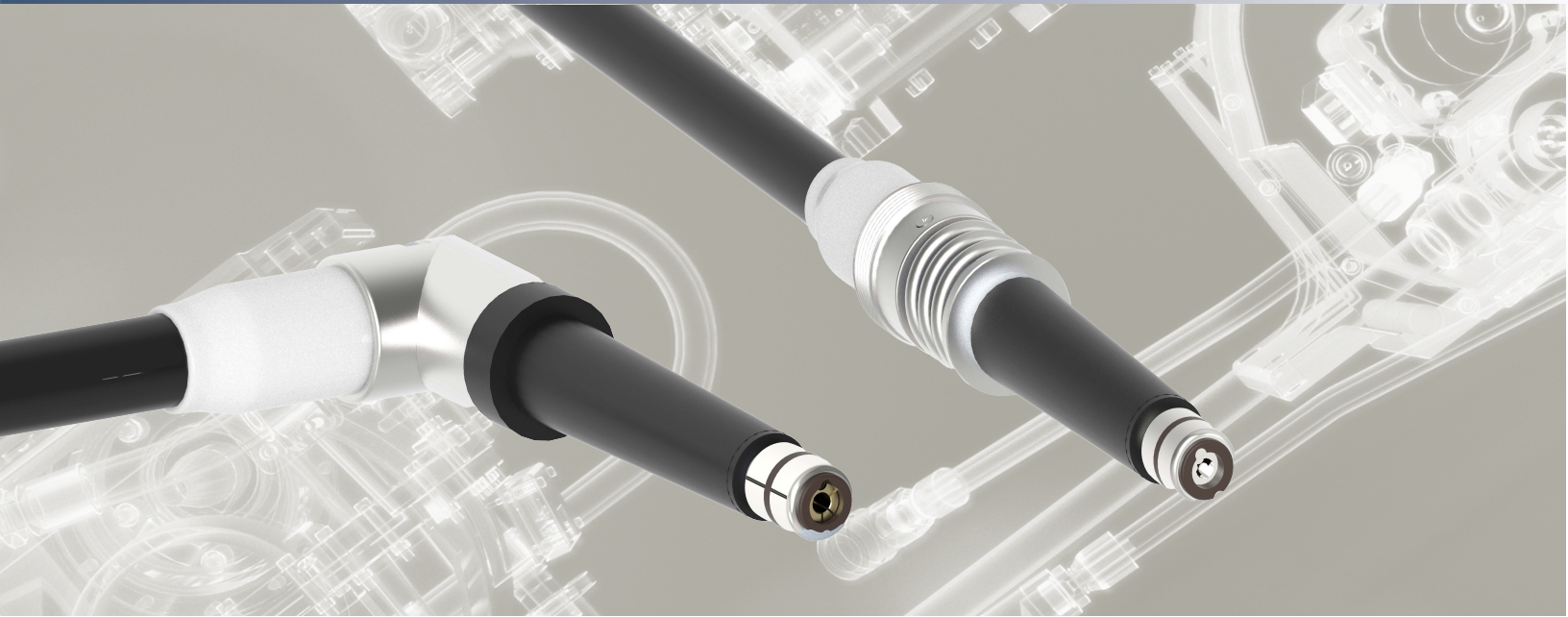


CA10-TYPE (R10)

Connector for up to 100 kVDC ⁽¹⁾



DESCRIPTION

The spring-loaded plug is made of high-insulation EPDM rubber and stainless steel flanges. A cable flange (to be ordered separately) is required to install the plug in its receptacle. The best performance is guaranteed by using Varex connectors and receptacles.

Please contact us to find the most suitable type for your application.

FEATURES

- A selection of small-diameter, highly flexible cables
- High-temperature resistant silver-plated contact tip
- High-quality EPDM rubber with a smooth cone surface ensures reliable connections
- Spring loaded version: Visible indicator if compression is Too low / OK / Too high
- Sturdy internal cable fixation and grounding
- UL recognized component ¹⁾
- REACH and RoHS Compliant ²⁾

APPLICATIONS

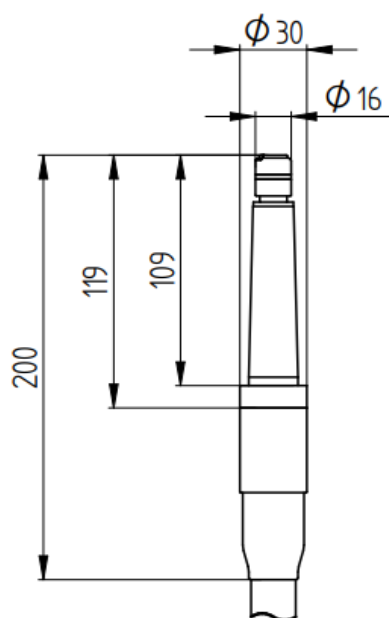
Varex CA10-type connectors are 3-contact industrial-style R10 connectors rated for up to 100 kVDC. Type-tested under the most severe conditions to ensure performance under the most demanding conditions.

This connector is available in spring-loaded or non-spring loaded (conventional) in both straight and right-angle configurations.

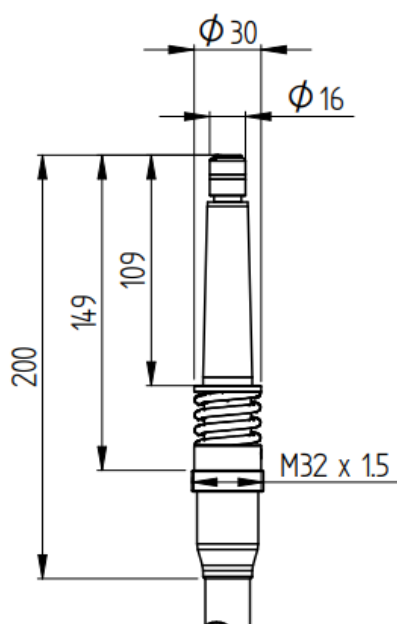
CABLE TYPE

- L3 (3 conductors, 75 kVDC)
- U3 (3 conductors, 100 kVDC)

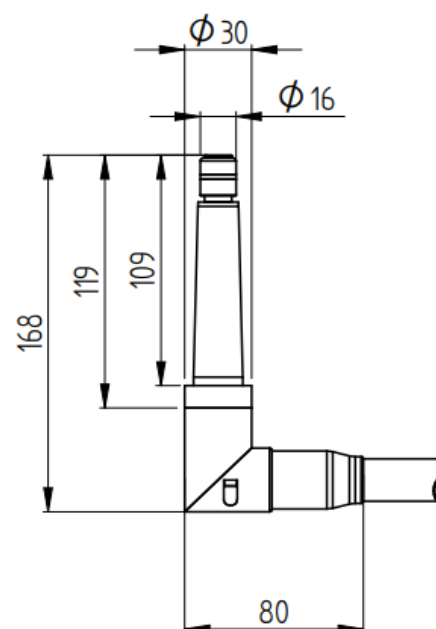
CONSTRUCTION CA10-TYPE (R10) *(Dimensions in mm)*



CA10



CA10 Spring-Loaded



CA10 Right-Angle

Technical Specifications

| | |
|--|----------------------|
| Number of contacts | 3 |
| Contact rating default contact tip | 1.5kVDC / 15A |
| Contact rating broad band contact tip | 3kVDC / 15A |
| Rated voltage ¹⁾ | 100 kVDC |
| Maximum continuous operating temperature | 80 °C (65 °C non SL) |

¹⁾ Depend on cable type & user application (contact us for more info).

²⁾ Compliance related to the maximum allowable concentrations and applicable exemptions for the restricted substances.

INSTALLATION

When installing the plug into the receptacle, a thin layer of silicone grease must be applied to the rubber cone to prevent high voltage arcing along the connector surface. A durable, high-voltage-proof installation requires sufficient compression of the plug. Therefore, the spring-loaded version has a visible indicator of the compression force.

Please refer to our installation guidelines for more information.

The data in this document is for reference only. Contents in this document are subject to change without notice.

Test Data

| | |
|------------------------|------------------------------|
| DC withstand | 125kVDC-24h |
| AC-50Hz | 50kVAC-1h |
| Pulses to GND | 125kVDC-1000x / 150kVDC-100x |
| DC-cycle (40kV/s rise) | 125kVDC-1000x / 150kVDC-100x |

MORE INFORMATION

Varex Imaging Nederland B.V. is part of Varex Imaging Corporation a leading innovator, designer, and manufacturer of X-ray imaging components, which includes tubes, digital flat panel detectors and other image processing solutions, which are key components of X-ray imaging systems.

TAILORED SOLUTIONS

In case our existing offering doesn't fit your needs, we have the inhouse capabilities to design a HV-connection and / or cable exactly as you need.

For more information, please contact a Varex Imaging sales representative in your territory. Contact details are available at www.vareximaging.com/contact/.



USA HEADQUARTERS
Salt Lake City, UT
P: +1-801-972-5000

Connect & Control Solutions
Doetinchem, Netherlands
Tel: +31 314-799870
Netherlands.CNC@vareximaging.com

For a complete listing of our global offices, visit
www.vareximaging.com