

DESCRIPTION:

Heat Exchanger (oil to air) with single fan. This system uses an accumulator (integral to the pump) for oil volume changes due to temperature changes.

HEAT EXCHANGER

Maximum Total Hose Length		
Housing	w/expansion diaphragm cover	wo/expansion diaphragm cover
B-128H	24m total (12m each hose)	12m total (6m each hose)
B-130H	10m total (5m each hose)	N/A
B-160H	16m total (8m each hose)	N/A
B-180H	16m total (8m each hose)	N/A

Note: HE-280/HE-281 must ship disconnected from the housing and hose kits



PERFORMANCE:

2.0 kW maximum continuous - Refer to cooling chart for DT ratings.

OIL HOSES:

30 inches minimum (0.75 meters)
40 feet maximum (12 meters)

POWER REQUIREMENTS:

HE-280 115 VAC 50/60 Hz 1.8 Amps
HE-281 230VAC 50/60 Hz 1.1 Amps

FAIL SAFE DEVICE:

Flow Switch - Normally open contacts. Contacts close with adequate oil flow.

DIMENSIONS:

Width - 9.6 inches (244 mm)
Length - 15.9 inches (404 mm)
Height - 4.4 inches (112 mm)

WEIGHT:

27.5 Pounds (12.5 kg)

MOUNTING:

Select mounting location where ambient temperature is low.

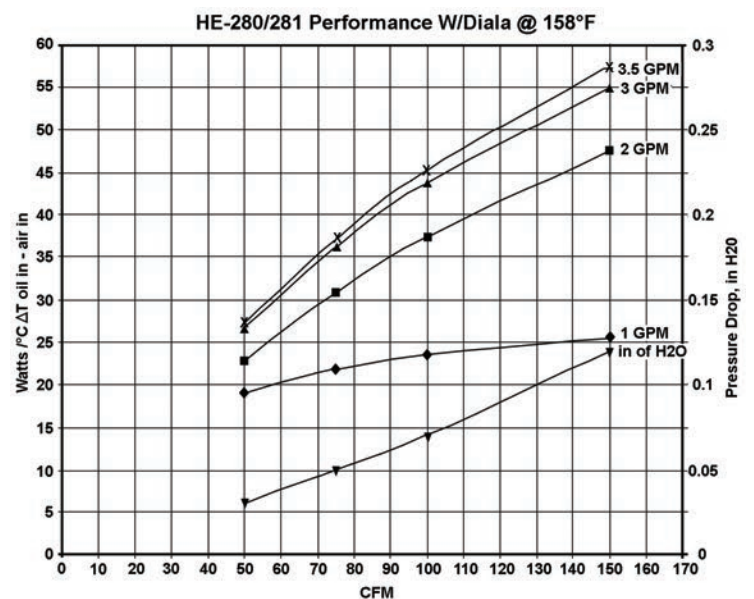
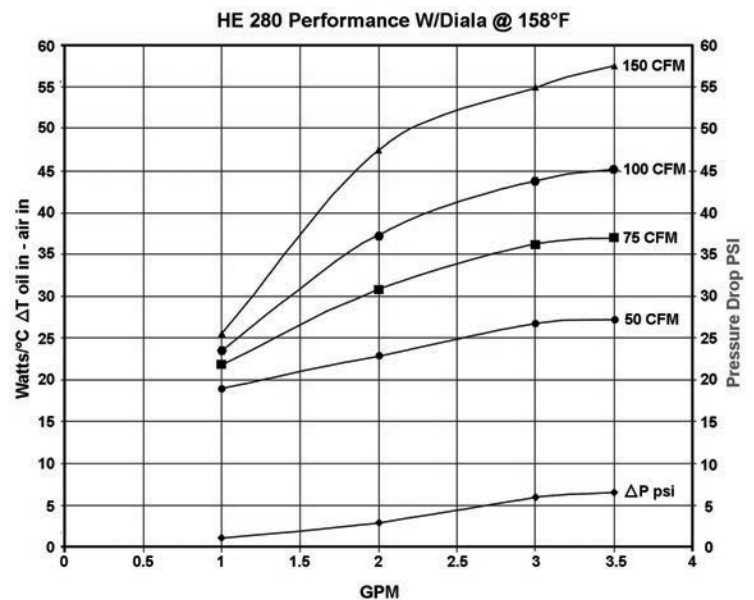
Connect power cord to source that is energized whenever x-ray tube with heat exchanger is selected.

Connect flow switch and thermal switch on housing in series with existing exposure interlocks.

CONNECTING OIL LINES WITH QUICK DISCONNECT FITTINGS:

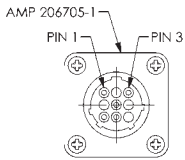
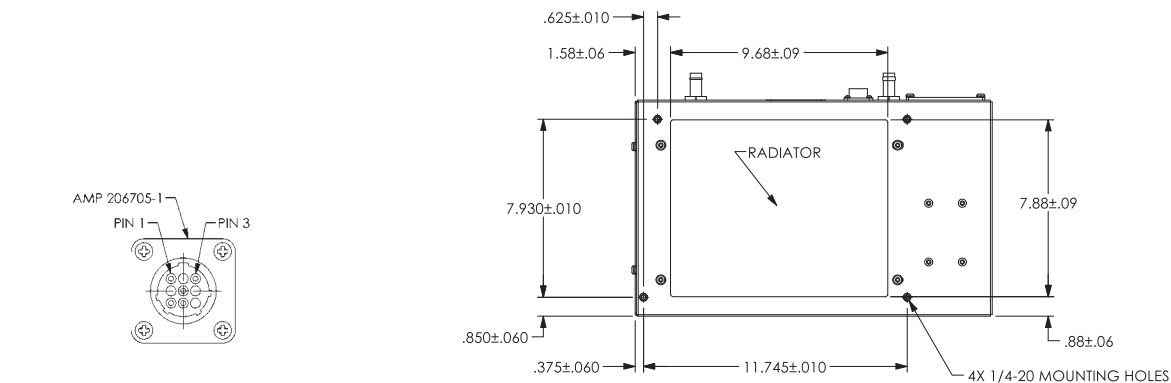
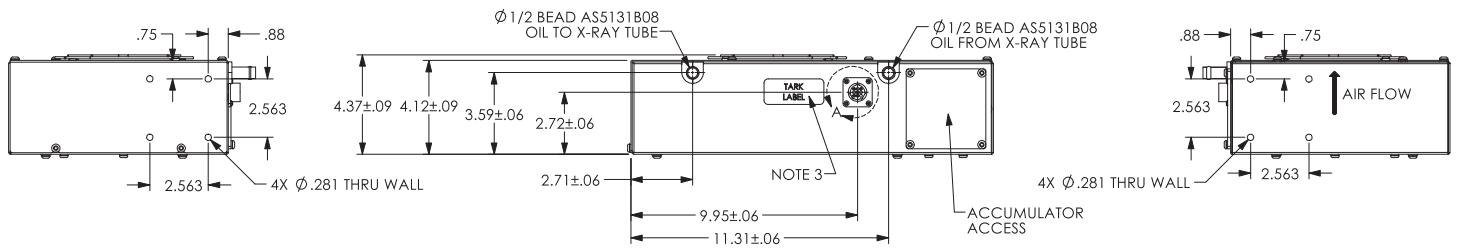
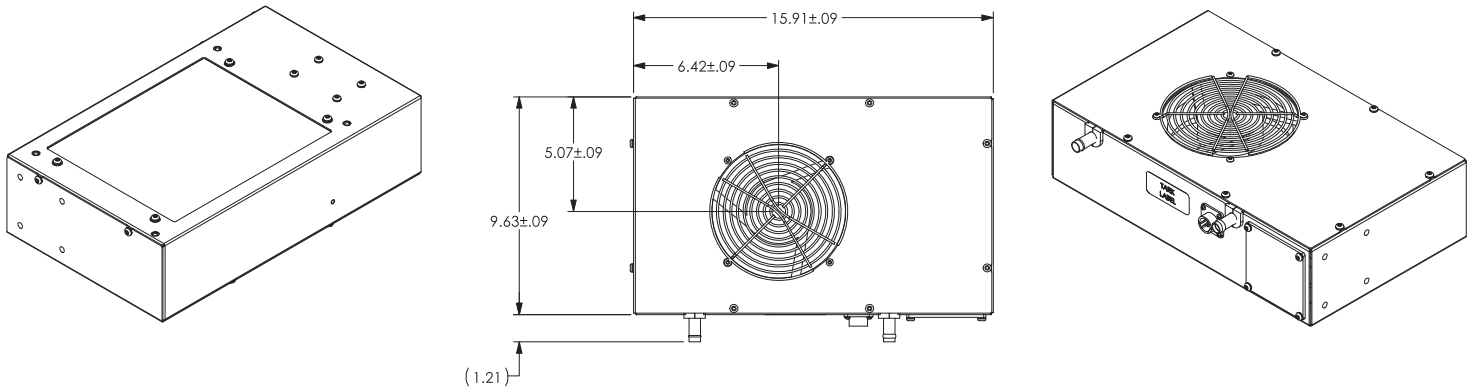
To prevent air in housing from oil line quick disconnect fittings observe the following procedures.

- Do not apply any side pressure on fittings such as from tie-wrapping to cable bundles or looping in tight circles.
- Never run heat exchanger with fittings disconnected.



OUTLINE DRAWING

Dimensions are for reference only



PIN (AMP 66099-4)	WIRE	
1	BLACK	POWER, PUMP AND FAN
5	GREEN/YELLOW	
3	WHITE	
7	PINK	FLOW SWITCH
8	PINK	