

DESCRIPTION:

Heat Exchanger (oil to water).
 For use with B-130H, B-150H, B-160H, B-180H, B-200H,
 B-220H and B-240H housings.

PERFORMANCE:

2.0 kW with the following conditions:
 1) 2 GPM Water Flow (36°C)

OIL HOSES:

3/8" diameter beaded tube inlet and outlet

WATER HOSES

1/2" diameter beaded tube inlet and outlet

POWER REQUIREMENTS:

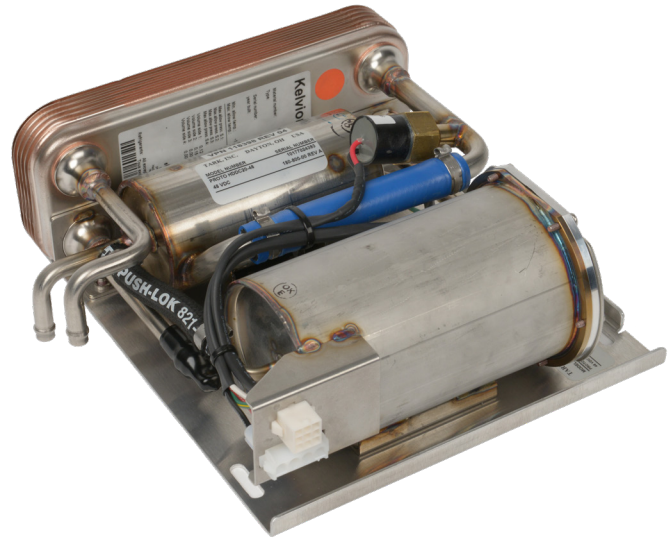
48 VDC ±10% 3.7 Amps

WEIGHT:

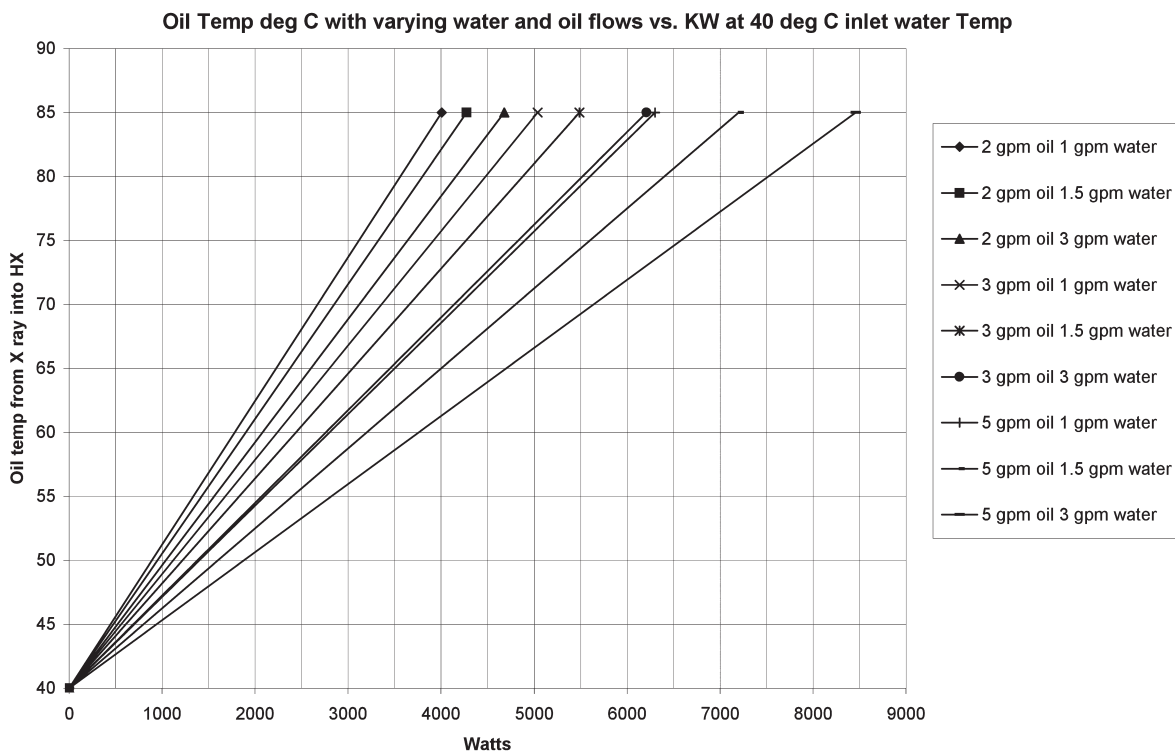
13 lbs. 4 oz dry (6.01 kg)

Additional Hardware:

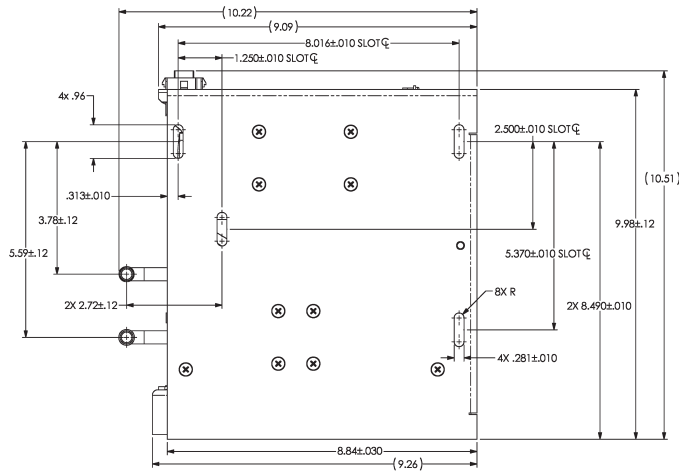
Requires the use of a controller unit. See Page 2 for details.



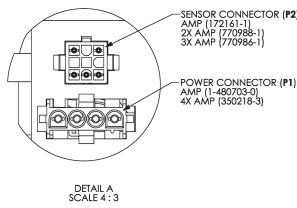
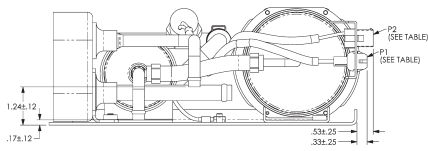
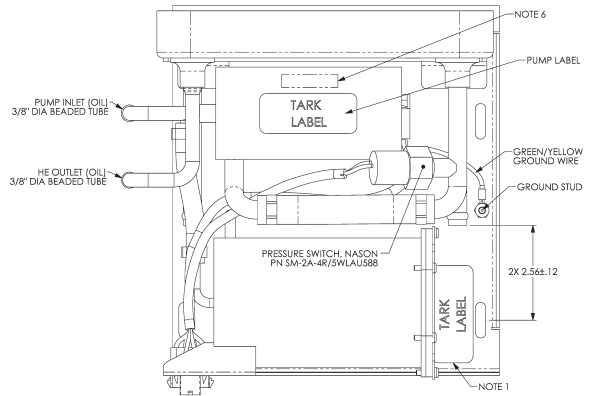
Cooling Characteristics



Outline Drawing

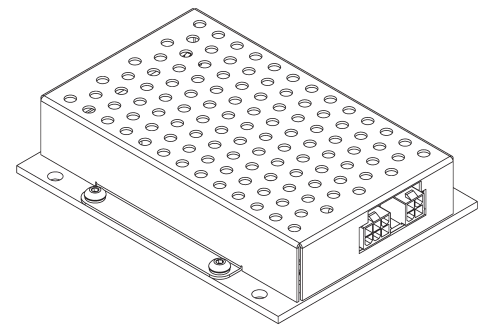
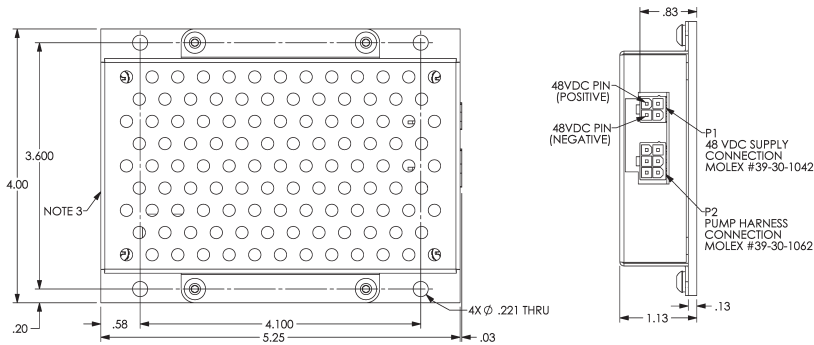


Dimensions are for reference only



PIN ASSIGNMENT TABLE				
CONNECTOR	PIN#	AWG SIZE	COLOR	FUNCTION
P1	1	18	BLACK	U
	2	18	RED	V
	3	18	WHITE	W
	4	18	GREEN/YELLOW	GROUND
P2	1	18	BLACK	PRESSURE SW
	3	18	RED	PRESSURE SW
	7	26	WHITE	RTD
	8	26	WHITE	RTD
	9	26	RED	RTD

Controller Unit



- NOTES:
 1. UNIT AMBIENT TEMPERATURE: 0 - 50 C
 2. UNIT WEIGHT TO BE 5.017 ± 2 lbs.
 3. AUTO RESTART MUST OCCUR AFTER POWER FAULT.

P1 CONNECTOR PIN ASSIGNMENT	
PIN	FUNCTION
1	NC
2	NC
3	+48VDC
4	0VDC

P2 CONNECTOR PIN ASSIGNMENT	
PIN#	FUNCTION
1	NC
2	GROUND
3	NC
4	W
5	V
6	U