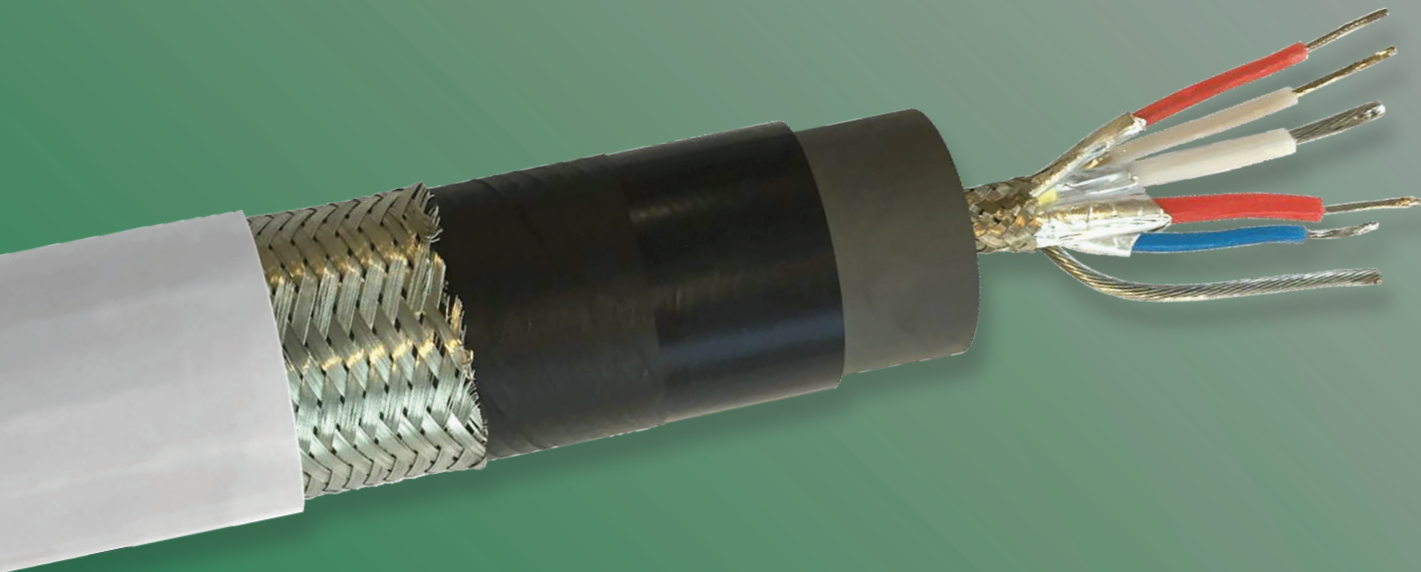


N6-TYPE

160 kVDC rated Cable



6-conductor, 160 kVDC rated rubber insulated high voltage cable.

FEATURES

- Flexible.
- Triple extruded construction.
- Insulated conductors shielded with metallized tape.
- PVC jacket.
- RoHS & REACH compliant.

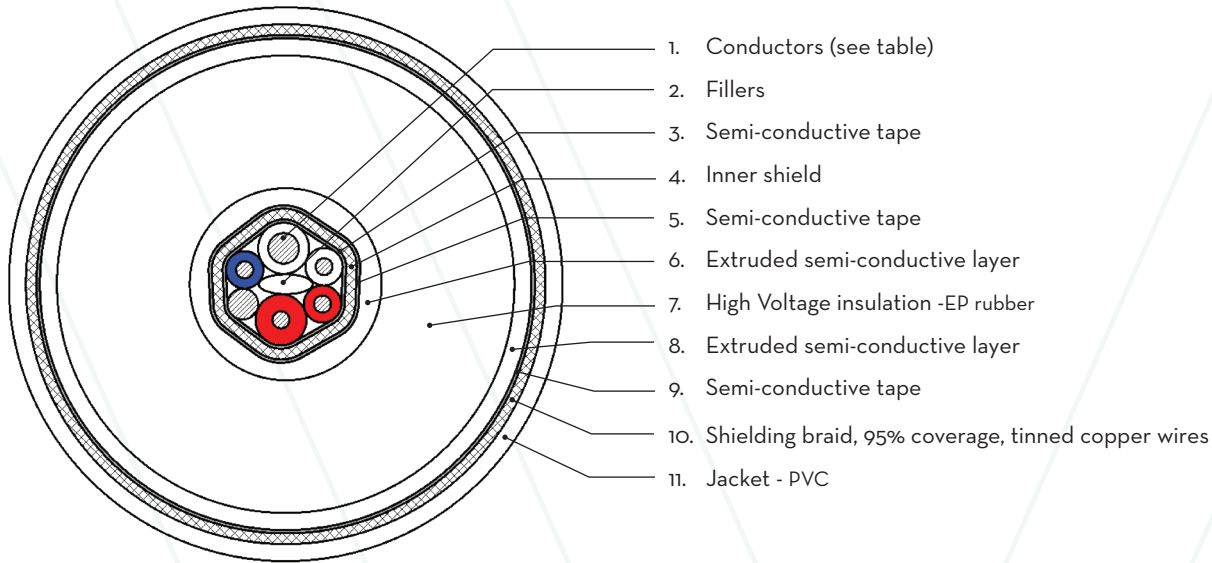
DESCRIPTION

This 6-conductor, rubber insulated high voltage cable's typical applications are:

- Medical X-ray tubes for CT.
- Low power, high voltage test and measuring equipment.

CONSTRUCTION N6-TYPE CABLE

(Illustration is not to scale)



Insulated conductors, type A (3x)	Annealed Tin coated copper wires, 0.5 mm ² , stranded 19 x Ø0.18mm, ETFE insulated, color Red, White and Blue. Outer diameter Ø2.15 mm. Shielded with metallized tape.
Insulated conductor, type B (1x)	Annealed Tin coated copper wires, 0.5 mm ² , stranded 19 x Ø0.18mm, ETFE insulated, color Red. Outer diameter Ø3.0 mm. Shielded with metallized tape.
Insulated conductor, type C (1x)	Annealed Tin coated copper wires, 1.8 mm ² , stranded 19 x Ø0.35mm, ETFE insulated, color White. Outer diameter Ø3.1 mm. Shielded with metallized tape.
Bare conductor (1x)	Annealed Tin coated copper wires, 1.8 mm ² , stranded 19 x Ø0.35mm.

Technical Specifications

Number of conductors	6
Rated voltage	160 kVDC
Routing test voltage (high voltage insulation)	190 kVDC, 30 minutes
Rated voltage between conductors	
Type A	5 kVDC
Type B	9 kVDC
Type C	1 kVDC
Overall outer diameter	34 mm
Conductor resistance @ 20°C	
Type A and B	41.5 mΩ/m (maximum)
Type C and Bare	11 mΩ/m (maximum)
Capacitance (calculated)	159 pF/m
Characteristic impedance	45Ω
Recommended minimum bending radius (static)	0.07 m
Weight	1.39 kg/m

MORE INFORMATION

Varex Imaging Corporation is a leading innovator, designer and manufacturer of X-ray imaging components, which includes tubes, digital flat panel detectors and other image processing solutions, which are key components of X-ray imaging systems.

For more information, please contact a Varex Imaging sales representative in your territory. Contact details are available at www.vareximaging.com/contact-information.

Varex Imaging Corporation

Headquarters

Salt Lake City, UT
 Tel: 801-972-5000
 Fax: 801-973-5050

Connect & Control

The Netherlands
 Tel: +31 315 659150
Netherlands.CNC@vareximaging.com

©2017 Varex Imaging Corporation.
 All Rights reserved.

Production of any of the material contained herein in any format or media without the express written permission of Varex Imaging Corporation is prohibited.