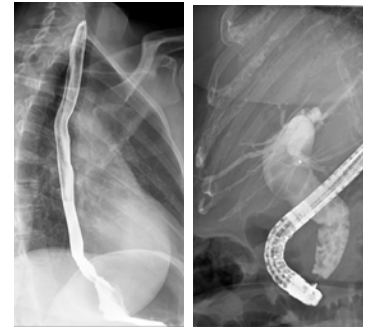
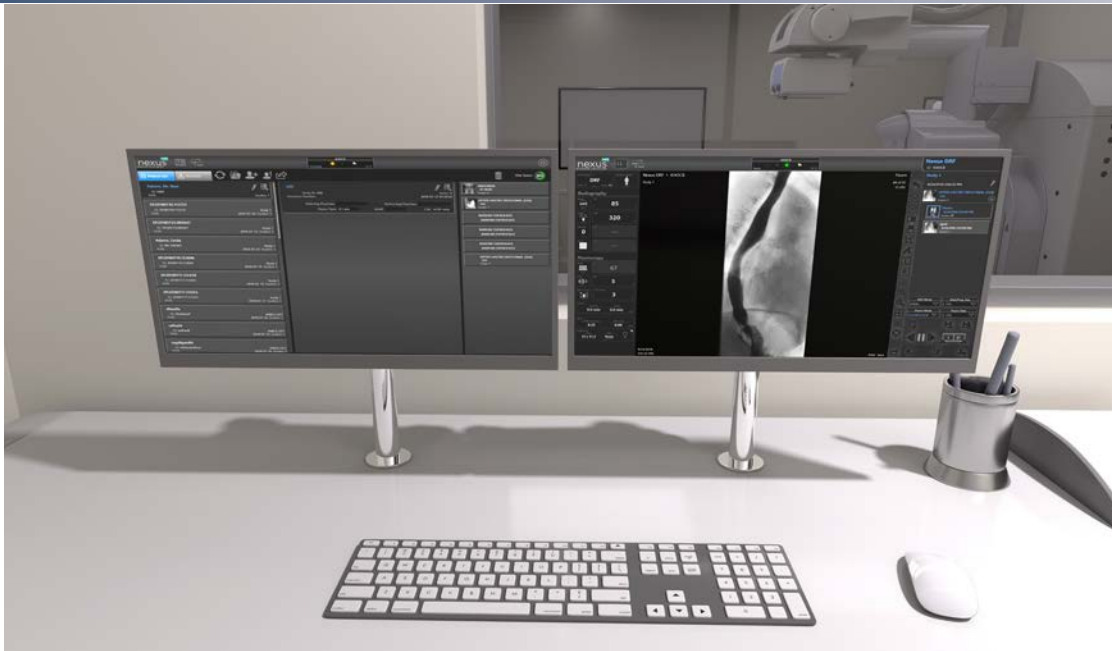


NEXUS DRF Digital Image Acquisition



A multi-purpose digital imaging system, Nexus DRF combines R&F and DR capabilities on one imaging platform using Varex's 4343CB dynamic flat panel detector.

Nexus DRF brings Varex Imaging's years of experience in digital imaging technology together with Varex Imaging's flat panel technology to bring you a system that adds to your R&F imaging needs.

Cost-effectiveness

- Fully integrated system solution from one supplier
- Service mode with remote diagnostics

Ease of Use

- IOS-like look and feel with multi-touch monitor
- Patient worklist selection when integrated with RIS
- Pre-loaded exam protocols
- Auto Send to DICOM server

Image Processing

- Site specific image processing capability

Interface Capabilities

- Collimator¹
- Generator²

Acquisition

- Real-time automatic image optimization
- Serial acquisition up to 12 FPS
- High resolution serial acquisition up to 4 FPS
- Supports multiple studies for a single patient session
- Basic Radiation Structured Dose Report
- Angiography Package*
- DR image acquisition

* Optional Feature

Fluoro

- Pulsed Fluoro
- Acquisition up to 25 FPS
- Fluoro loop with the option to store entire loop or single frames
- Fluoro loop cropping to relevant frames, to reduce file size
- Last image hold with option to review previous frames
- Contrast and Edge Enhancement
- Adaptive Motion Correction with Integration
- Fast ABS (Automatic Brightness Stabilization)

Image Processing Software

- Dose and processing are automatically optimized based on selected frame rate and magnification
- Imaging parameters tied to customizable APR-based acquisition profiles
- Measurement and annotation tools
- MRP - Multi-Resolution processing
- Image Gently - acquisition parameters based on patient age/size
- AutoStore Fluoro Loops
- Exposure Index

Software Features

- HIS/RIS work list support
- Configurable automatic study advance
- Over 500 preloaded exam profiles
- Accept/reject functionality
- Auto region of interest (ROI)
- Background multi-tasking simultaneous image processing and DICOM functions
- Reject Analysis Report

DICOM 3.0 Network Interface

- DICOM 3.0 network interface kit includes print class, storage class, work list, modality perform procedure step, and storage commitment class

Supports IHE Integration Profiles

- Consistent Presentation of Images (CPI)
- Consistent Time (CT)
- Portable Data for Imaging (PDI)
- Scheduled Workflow (SWF)
- Radiation Exposure Monitoring (REM)

Nexus DRF System Specifications

- PC Tower electronics enclosure
- High speed CPU & GPU processing
- Configured to support the Varex Imaging panels
- RAID image storage (not intended to be an archival device)
- Windows 10® operating system
- User input via touchscreen or keyboard & mouse

¹Contact your account manager for currently supported or any future supported collimators.

²Contact your account manager for currently supported or any future supported generators.

For more information about the Nexus DRF, please contact your Varex Imaging representative.

Unless otherwise specified, Varex Nexus DRF components are intended to be integrated into products by X-ray system manufacturers. System manufacturers are responsible for qualifying and validating their products for their intended uses and meeting all applicable regulatory requirements.

All promotional material and the information provided herein is for planning purposes only. Commercial sale is dependent upon regulatory clearance.

Varex Imaging Corporation

HEADQUARTERS
Salt Lake City, UT
Tel: 801-972-5000

WORKSTATION PRODUCTS
121 Metropolitan Dr.
Liverpool, NY 13088
Tel: 315-234-6800

©2024 Varex Imaging Corporation. All Rights reserved.
Production of any of the material contained herein in any format or media without the express written permission of Varex Imaging Corporation is prohibited.