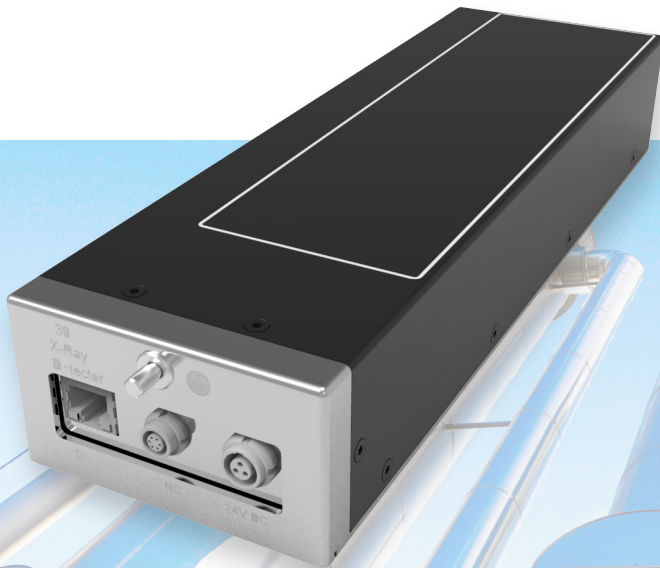


2307N AND 2307S CMOS Industrial Flat Panel Detectors



Superior Image Quality
with High Resolution for
Non-Destructive Testing

OVERVIEW

Varex Imaging's 2307N CMOS Flat Panel X-ray Detector is a high speed, low noise X-ray detector with a long and narrow active area suitable for high-energy pipe inspection. The 2307S is designed for low-dose applications e.g. pre-clinical imaging. The 2307N and 2307S CMOS employ state-of-the-art large-area CMOS (Complementary Metal-Oxide Semiconductor) image sensor technology.

Varex Imaging's 2307N and 2307S CMOS Flat Panel X-ray Detectors have switchable pixel gain that makes it well suited to real-time imaging and CT as well as static imaging with high dynamic range.

FEATURES AND BENEFITS

- 74.8 μm pixel pitch
- 3072 x 864 pixel matrix
- High Sensitivity and High Dynamic Range modes
- Operation up to 225 kV (2307N) or 90 kV (2307S)
- Suitable for real-time imaging at up to 190 fps
- 1 x 1, 2 x 2 and 4 x 4 pixel binning options
- High DQE
- Various scintillator options available
- Input/output for X-ray generator synchronization
- GigE Vision data connection

APPLICATIONS¹

- Weld and Pipe inspection
- Aerospace
- Industrial non-destructive testing
- Micro Cone Beam Computed Tomography
- Scientific applications
- Pre-clinical imaging (2307S)

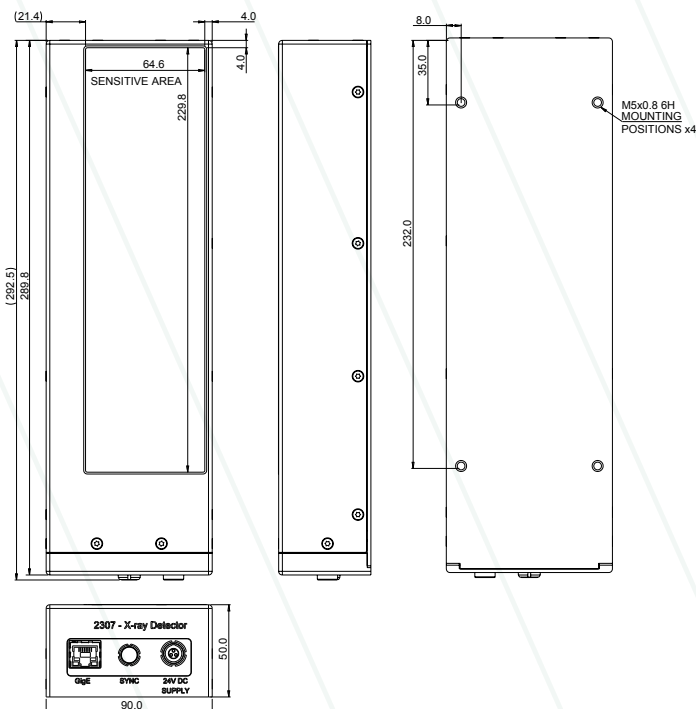
Technical Specifications

SENSOR		
Pixel Size (µm)	74.8	
Sensitive Area (mm ²)	229.8 × 64.6	
Pixel Matrix (px)	3072 × 864	
MAX FRAME RATE (FPS)		
Pixel Binning	GigE Vision	
1×1	15	
2×2	63	
4×4	190	
IMAGE PERFORMANCE		
	2307N	2307S
Dynamic Range (dB)		
High Dynamic Range Mode	typ. 73	
High Sensitivity Mode	typ. 69	
X-ray Energy Range (kV)	12 - 225	12 - 90
MECHANICAL		
	2307N	2307S
Weight (kg)	5.2	2.5
Dimensions l × w × h (mm ³)	290 x 90 x 50	

COMMUNICATIONS	
Camera Link	N/A
GigE Vision	1000BASE-T
Digital Output	14-bit
Control Channel	115 kBaud serial link
Sync Ports	6w LEMO
Sync In Port	3 - 15 V edge or level trigger
Sync Out Port	TTL (0 - 5.0 V)
Software	Support for 32 and 64 bit Windows® OS
POWER	
Dissipation	25 W
SCINTILLATOR OPTIONS	
2307N	High Resolution CsI
2307S	Gadox AD Mammo
TEMPERATURE RANGE	
Operating Temperature	+10°C to +40°C
Storage Temperature	-10°C to +50°C
ACCESSORIES	
Power Supply Type	PSU-3A
Power Cable	3 m Lemo Low Voltage
Power Supply Input	50 - 60 Hz, 100-240 VAC
Power Supply Output	24 V
Network Interface Card	Intel I210-T1

MECHANICAL CHARACTERISTICS

(Dimensions in mm)



¹ Unless otherwise specified, Varex Imaging Flat Panel X-ray Detectors are components intended to be integrated into products by X-ray system manufacturers. System manufacturers are responsible for qualifying and validating their products for their intended uses and meeting all applicable regulatory requirements.

Contents in this document are subject to change without notice.

Varex Imaging Corporation

USA

HEADQUARTERS
Salt Lake City, UT
P: +1-801-972-5000

Germany
Walluf
P: +49-6123-971-300

China
Wuxi
P: +86 510 8592-9201

For a complete listing of our global offices,
visit www.vareximaging.com

©2019 Varex Imaging Corporation. All Rights reserved. Production of any of the material contained herein in any format or media without the express written permission of Varex Imaging Corporation is prohibited.