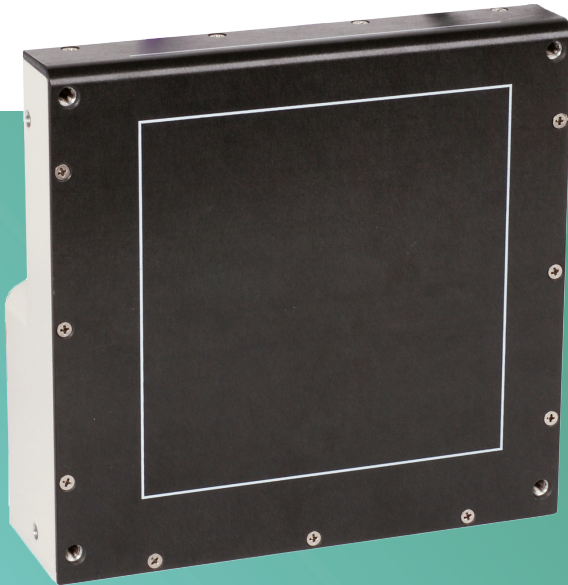


# PAXSCAN® 1308DX

## Digital Radiography



PaxScan 1308DX imagers provide CBCT and Panoramic image quality for mid-size dental applications.

### OVERVIEW

PaxScan 1308DX imagers provide industry leading CBCT (cone beam computed tomography) and Panoramic image quality for mid-size dental applications. Varex Imaging's amorphous silicon based detectors are the gold standard for CBCT in medical, dental and industrial applications. Amorphous silicon brings key advantages unmatched by other technologies.

Varex Imaging's extensive dental product line allows the OEM to easily integrate multiple panel sizes. The Virtual CP software interface is common across all the panels and the entire product line is offered with Gigabit Ethernet. The 1308DX field of view (FOV) can be located center, left or right justified within the area of the 1313DX FOV.

### FEATURES AND BENEFITS

- Radiation hardness > 1MRad
- Widest input energy range
- Immunity from single photon events in the substrate
- Excellent low dose performance
- Proven 3-D soft-tissue capability
- Supports panel sharing
- Customizable overlay

### APPLICATIONS<sup>1</sup>

- CBCT
- Dental

# TECHNICAL SPECIFICATIONS

## SENSOR

Receptor Type .....	Amorphous Silicon
Conversion Screen .....	Direct Deposit Csl, DRZ Plus
Pixel Area Total .....	13.0 x 8.13 cm (5.12 x 3.2 in.)
Pixel Matrix Total .....	1024 x 640 (1 x 1) 512 x 320 (2 x 2)
Pixel Pitch .....	127 $\mu\text{m}^2$
Limiting Resolution .....	3.94 lp/mm
MTF, X-Ray .....	>48% @ 1 lp/mm (1 x 1), Csl screen
Energy Range .....	40 -160 kVp (*capable of 225 kV with additional tungsten shielding)
Fill Factor .....	57%
Image Capture .....	Pleora Gigabit
Scan Method .....	Progressive
A/D Conversion .....	16-bit
Frame Rate (Workstation dependent) .....	45 fps (1 x 1) 85 fps (2 x 2)
Data Output .....	Gigabit Ethernet
Exposure Control .....	Opto Coupled, External Sync, Expose OK

## SOFTWARE

The software release includes ViVA™, a basic application for image acquisition and viewing on an end-user workstation running Microsoft® Windows™. The developer's software package includes a "Virtual Command Processor" software interface that performs detector calibration, detector set-up, image acquisition, and image corrections. ViVA™ includes file type translators for .viv, .raw, .jpg, and .bmp file formats.

## POWER

Power Dissipation ..... 12 Watts (nominal power consumption)  
11 to 35V input range, 15V typical

Power Supply/Mains ..... 100 - 240 VAC, 47 - 63 Hz

## MECHANICAL

Weight ..... 3.76 lbs. (1.71 kg)

Housing Material ..... Aluminum

Sensor Protection Material ..... Carbon fiber plate (2.5 mm thick)  
and aluminum

## ENVIRONMENTAL

Temperature Range - Operating ..... 10°C to 35°C (max.)

(Ambient) - Storage ..... -20°C to +70°C

Humidity - Operating & Storage (non-condensing) ..... 10% to 90%

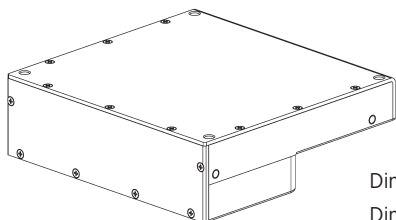
Atmospheric Pressure - Operating & Storage ..... 70 kPa to 106 kPa

## REGULATORY

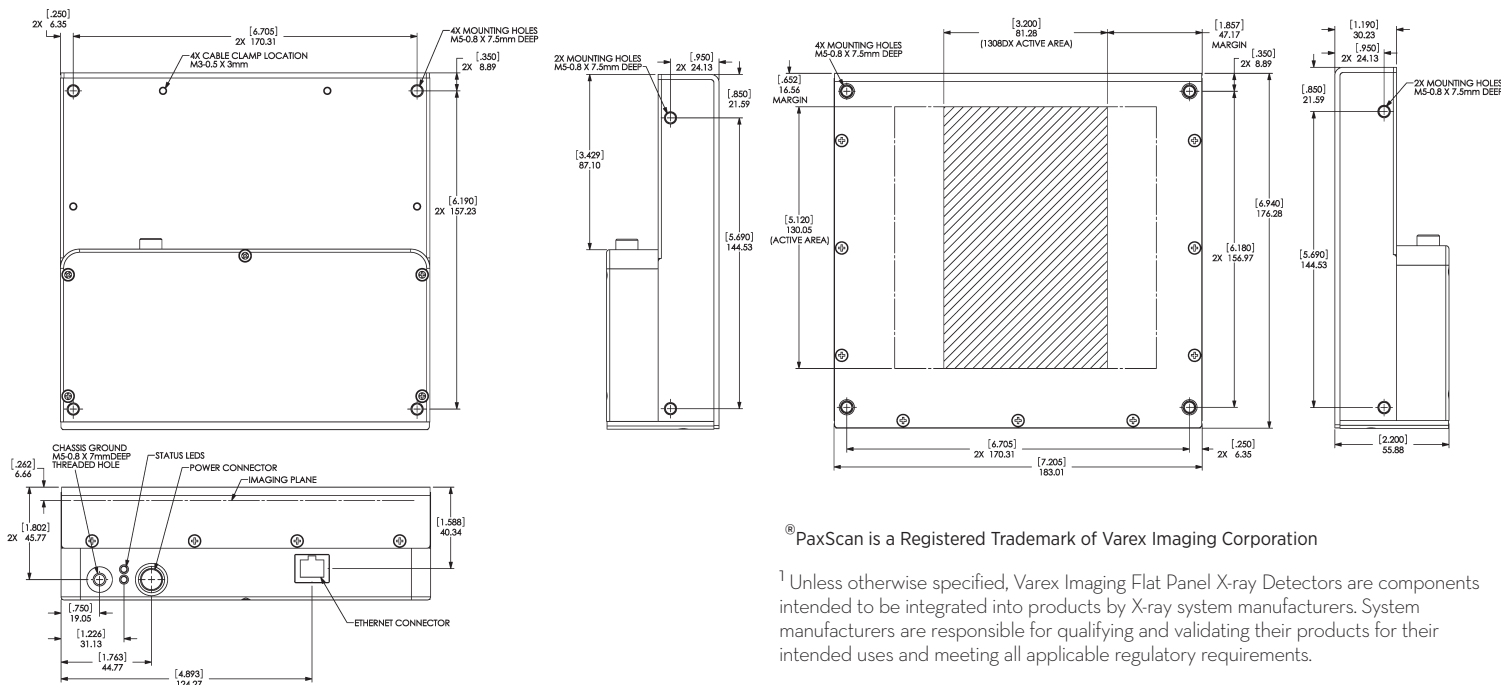
U.S. .... ANSI/AAMI ES60601-1:2005

Canada ..... CAN/CSA C22.2 No. 60601-1:08

EU ..... IEC/EN 60601-1:2005



Dimensions are for reference only  
Dimensions are in mm [Inches]



®PaxScan is a Registered Trademark of Varex Imaging Corporation

<sup>1</sup> Unless otherwise specified, Varex Imaging Flat Panel X-ray Detectors are components intended to be integrated into products by X-ray system manufacturers. System manufacturers are responsible for qualifying and validating their products for their intended uses and meeting all applicable regulatory requirements.

# VAREX IMAGING CORPORATION

USA HEADQUARTERS  
Salt Lake City, UT  
P: +1-801-972-5000

GERMANY  
Walluf  
P: +49-6123-971-300

CHINA  
Wuxi  
P: +86 510 8592-9201

For a complete listing of our global offices,  
visit [www.vareximaging.com](http://www.vareximaging.com)

©2021 Varex Imaging Corporation. All Rights reserved. Production of any of the material contained herein in any format or media without the express written permission of Varex Imaging Corporation is prohibited.