



DESCRIPTION:

Heat Exchanger (oil to water). For use with B130H, B150H, B160H and B180H housings.

Note: HE 200/201 requires the use of an HE 401 (water to air) cooler.

PERFORMANCE:

2.5 kW with the following conditions:

- 1) 1 GPM Water Flow using the HE 401 (water to air) cooler.

OIL HOSES:

24.33 feet maximum (7.4 meters).
1/2 inch I.D. hose diameter.

WATER HOSES (Between HE 200/201 and HE401:

- Catalog # IK120 100 feet (30 meters)
- IK121 133 feet (40 meters)

Note: The Quick Disconnects on each end of water hoses are not the same. Notice which connectors are for HE 401 and HE 200/201 before installing. HE 200/201 is not sensitive to water flow direction.

POWER REQUIREMENTS:

HE 200	100 - 120 VAC	50/60 Hz	1.8 Amps
HE 201	200 - 230 VAC	50/60 Hz	1.5 Amps

DIMENSIONS:

Width 9.625 inches (244 mm), Length 9.625 inches (244 mm), Height 4.00 inches (101 mm)

WEIGHT:

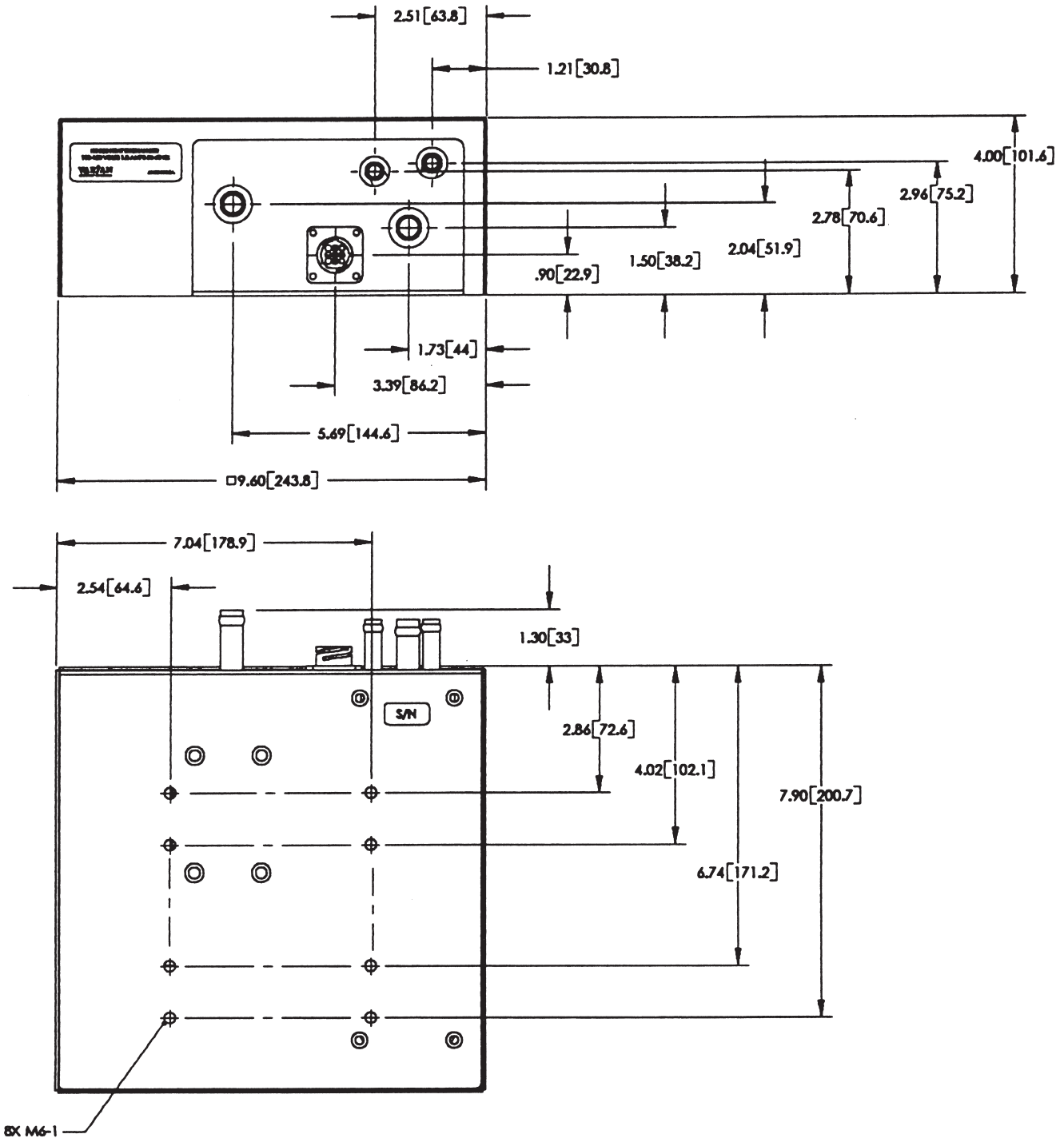
18.5 Pounds (8.4 kg)

Oil Lines With Quick Disconnect Fittings: To prevent air in housing from oil line quick disconnect fittings observe the following procedures.

- A. Do not put side pressure on fittings from tie wrapping to cable bundles or coiling in tight circles.
- B. Do not run heat exchanger with fittings disconnected.

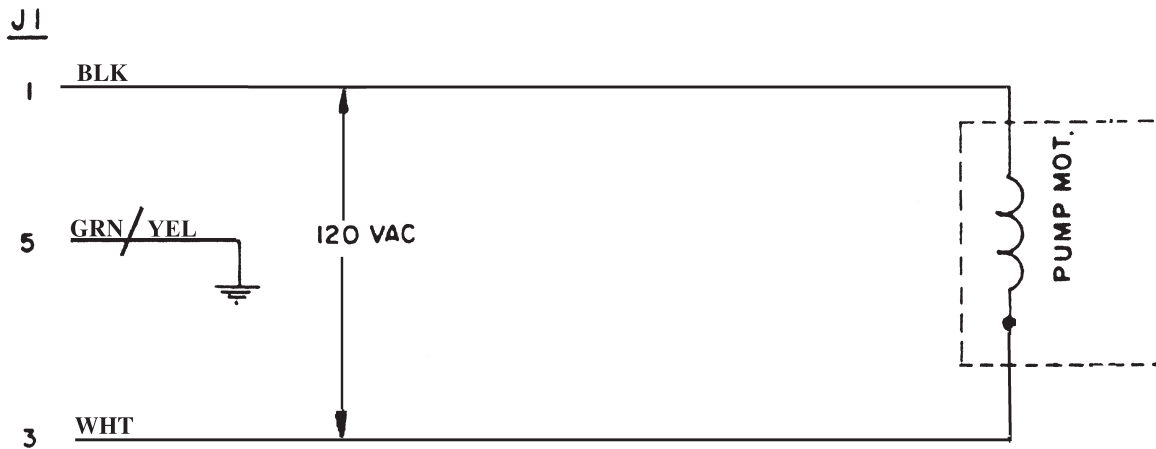
Outline Drawing

Dimensions are for reference only

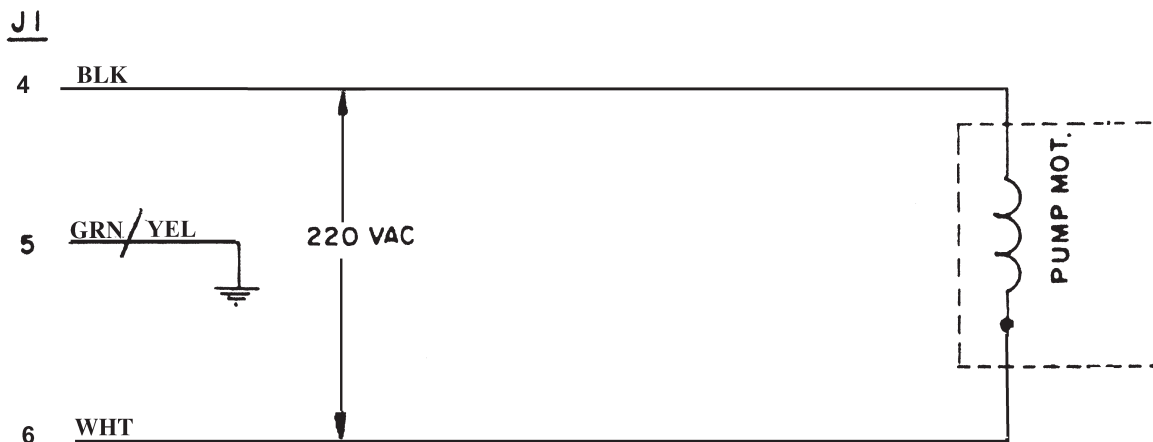


Wiring Diagram

HE-200
120 VAC 50/60 Hz



HE-201
220 VAC 50/60 Hz



Cooling Characteristics

HE-200 Cooling Rate

Combined w/HE-401, 30m 3/8in. ID hose, 60 Hz

